

Publication: Pre-hospital triage criteria for burns patient destination
Description: Flowchart to aid decision making of burns patient destination in the pre-hospital setting
Publication date: February 2019 Review date: May 2023 Review next due: May 2026 Ref No 5
Author: Midlands Trauma and Burns Networks
Circulation: WMAS, Midlands Trauma and Burns Network Providers
Superseded document(s):
Contact details for further information: Midlands Critical Care, Trauma and Burns Networks 15 Frederick Road Birmingham B15 1JD www.mcctn.org.uk
Document status: Whilst this document may be printed, it cannot be controlled, the electronic version posted on MCCTN website is the controlled document.

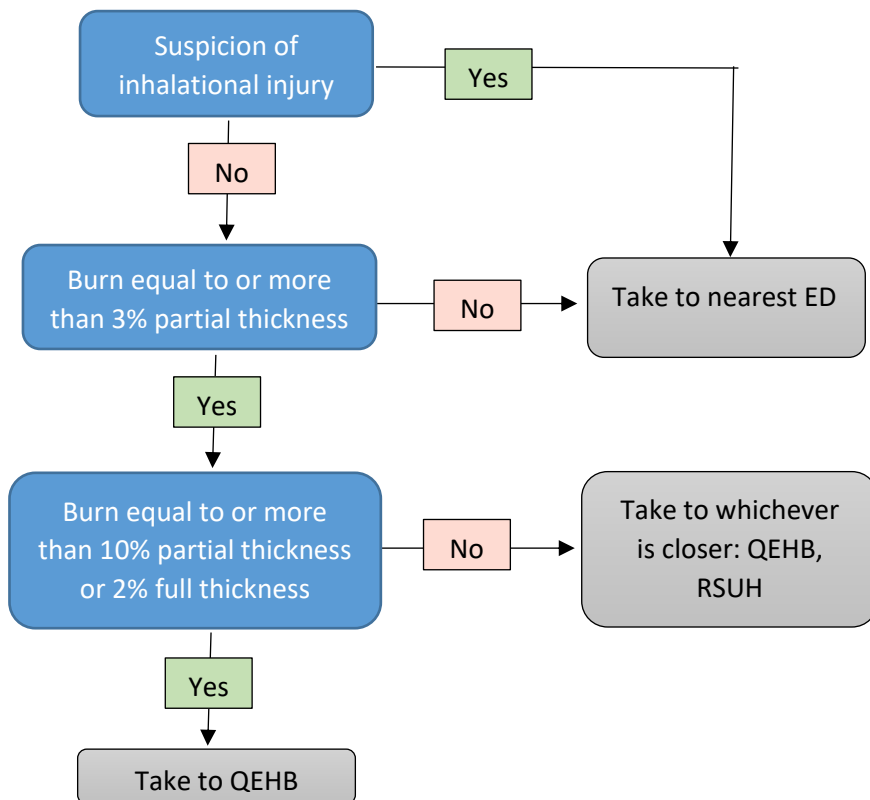
Amendments to previous version

7.4.20 Removal of UHCW from options in 'take to whichever is closer' box. CL

Pre-hospital triage criteria for burns patient destination

Queen Elizabeth Hospital Birmingham (QEHB) and Birmingham Children's Hospital (BCH) are the regional burns centres for adults (>16) and paediatrics (<16) respectively. This flowchart is designed to help pre-hospital practitioners make the right decision about hospital destination for isolated burns. **Where patients have a combination of burns and other traumatic injuries, the trauma desk should be called for advice as to whether this flowchart, or the major trauma triage tool, should be followed.** **Note: If patient is RSI'd take to the regional burn centre as the airway is secured.**

Adults (≥16)



Children (<16)

