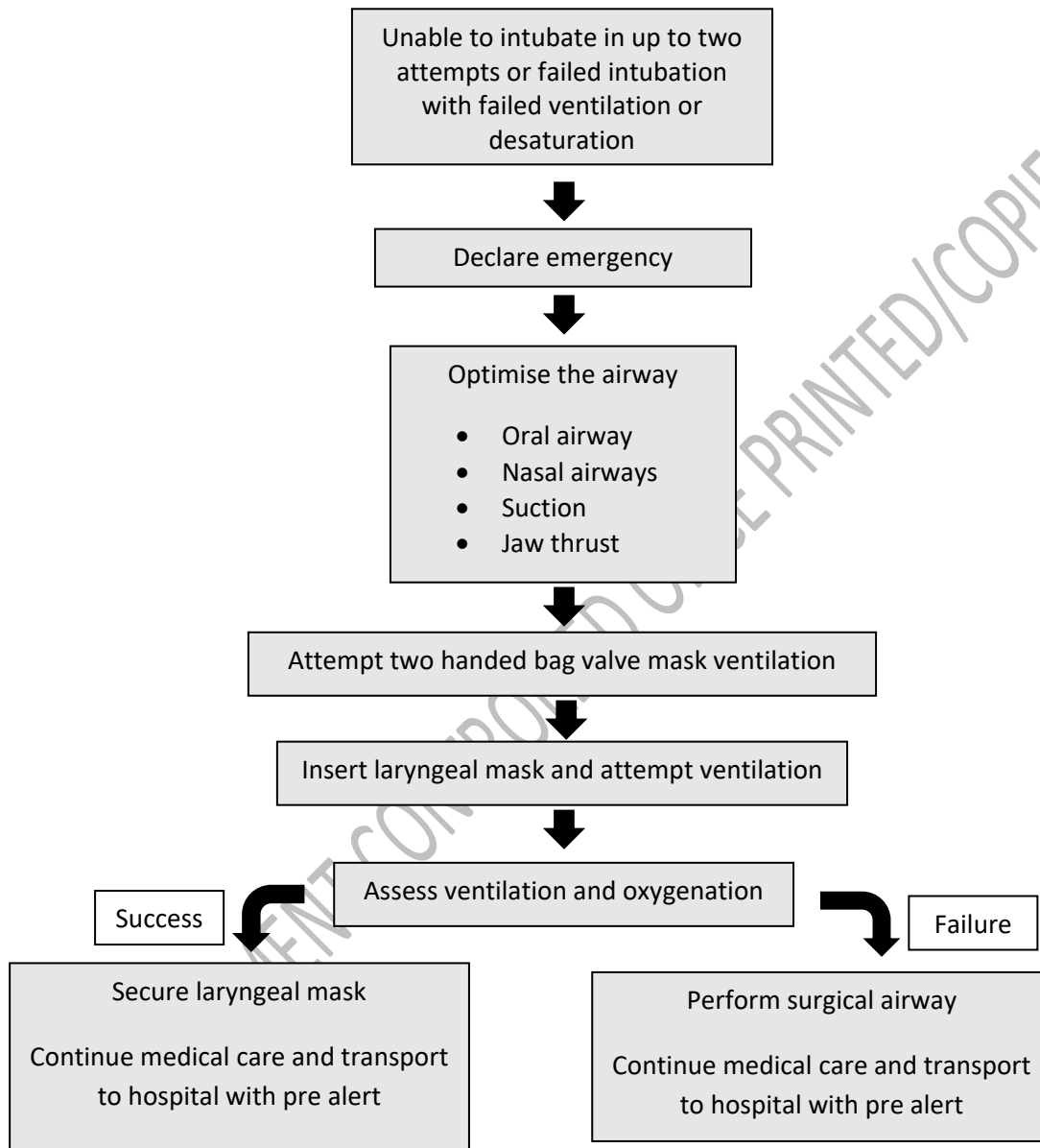




CSOP 013 - Pre Hospital Emergency Anaesthesia

Version No: 3.3	Effective Date: 18/09/2023
-----------------	----------------------------

Failed Intubation Drill



- Notes**
- Waking the patient is rarely an option after PHEA
 - Use clinical judgement in addition to this guidance
 - It may be appropriate to perform a surgical airway as the primary airway intervention or earlier in this flowchart
 - Surgical airway technique should be a standard approach as recommended by the Difficult Airway Society guidelines and TAAS